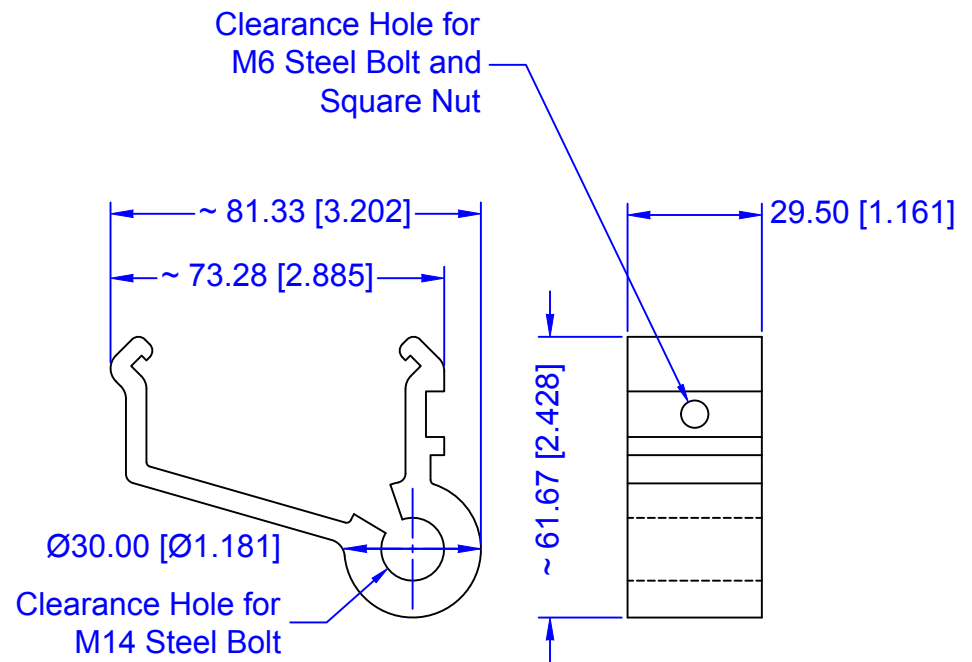


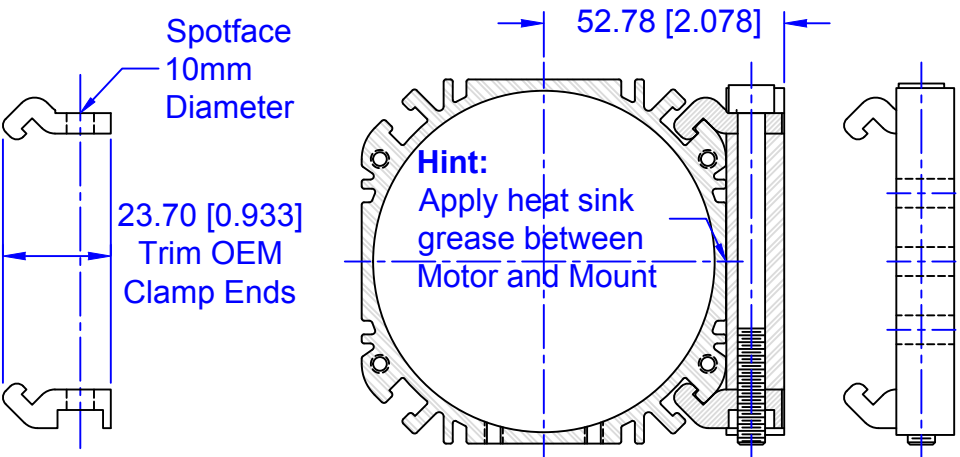
**NOTE:**  
The OEM failed to check the head diameter. The head rides on the outside edge.



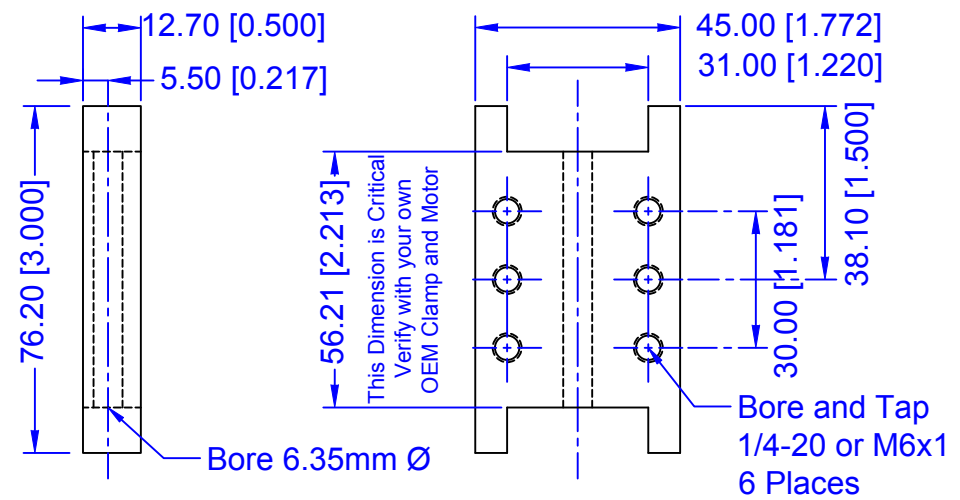
**SILLY OEM CS1000 MOTOR CLAMP FOR SEWING MACHINE**

This document/file is placed in the **PUBLIC DOMAIN**. The author assumes no liability for the accuracy, fitness or application of the information or design herein.  
Lewis Balentine, Houston, Texas, 5 February 2020

Unless otherwise noted all dimensions are in millimeters [inches].



**Note:** The excess number of mounting holes are so the motor can be raised when the 1 inch spacer block is used between the headstock and base.



**CS1000 MOTOR MOUNT FOR TAIG LATHE**